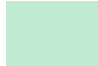





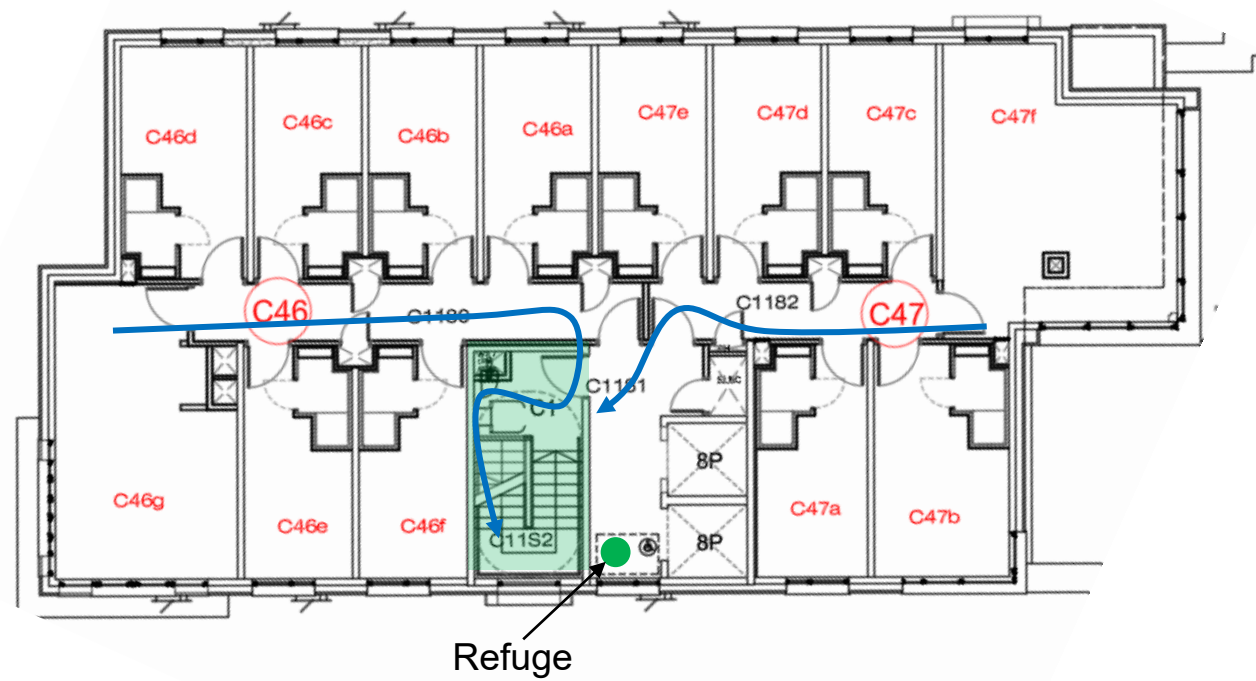


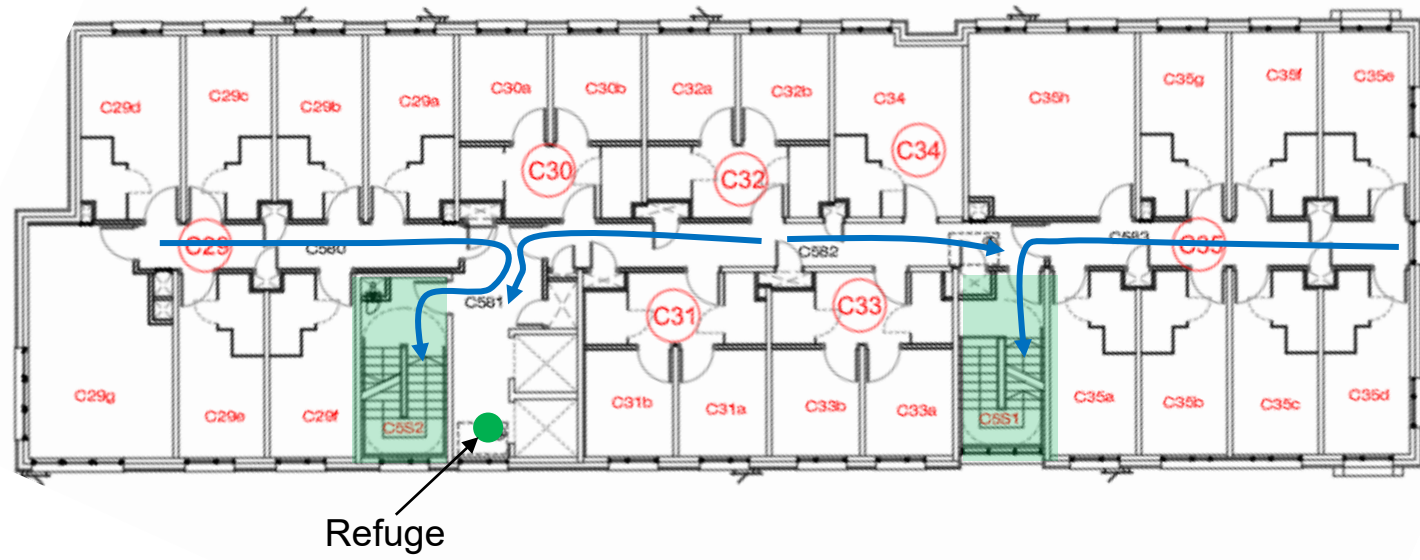
Key

-  Stairs protected from fire
-  Escape route (internal)
-  Refuge
-  External route to assembly point
-  Exit (level/ramped)
-  Exit (stepped)

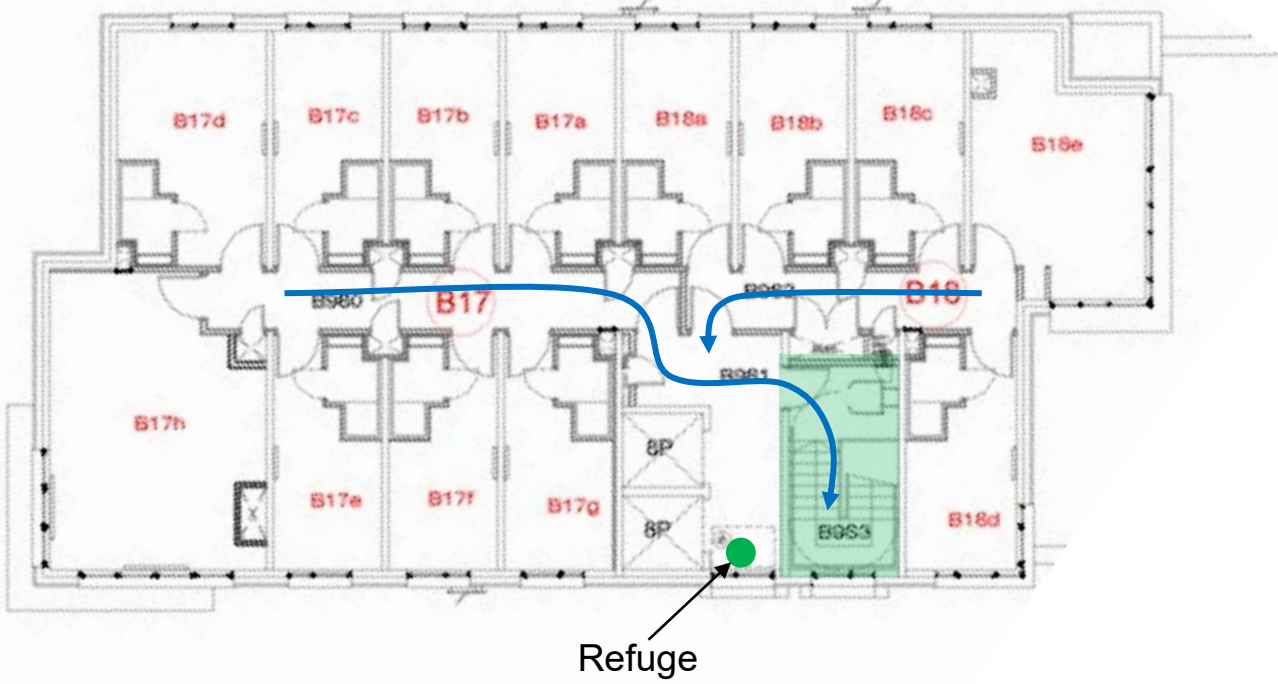
C Block – floors 6 to 11



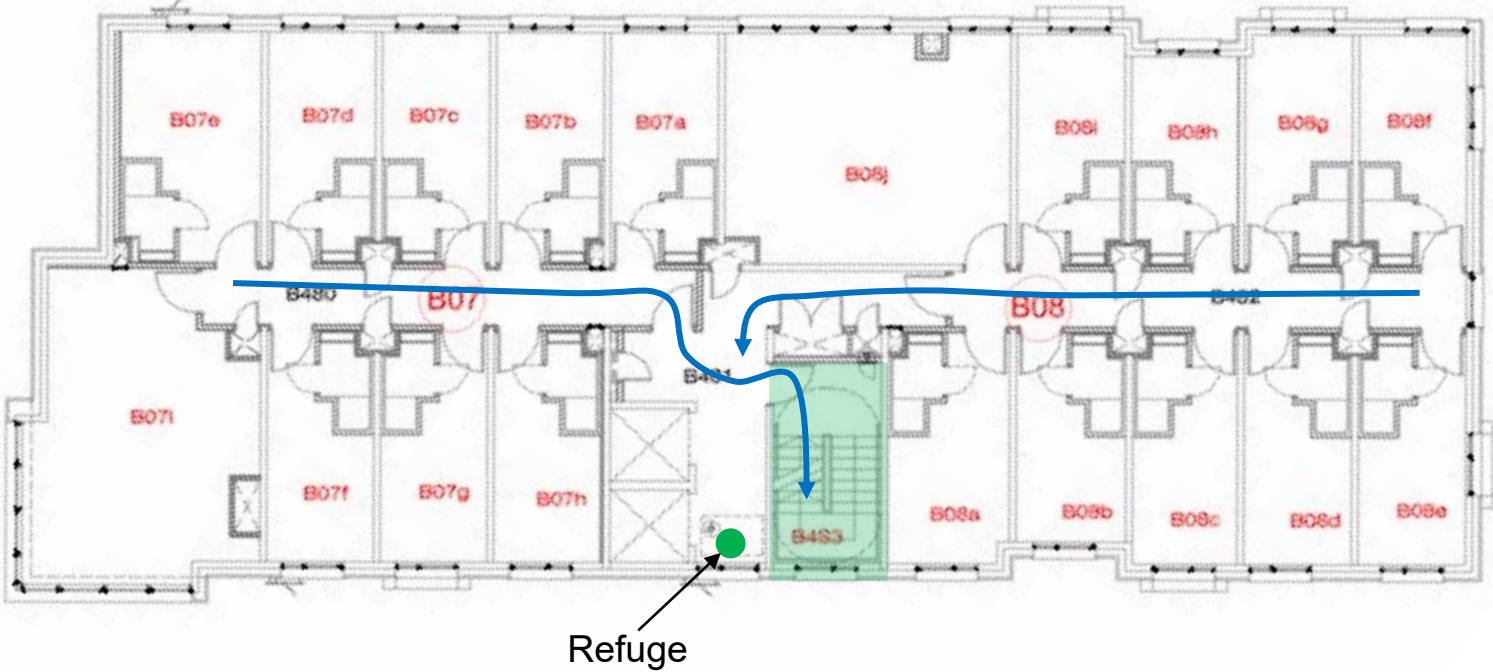
C Block – floors 1 to 5



B Block – floors 6 to 9



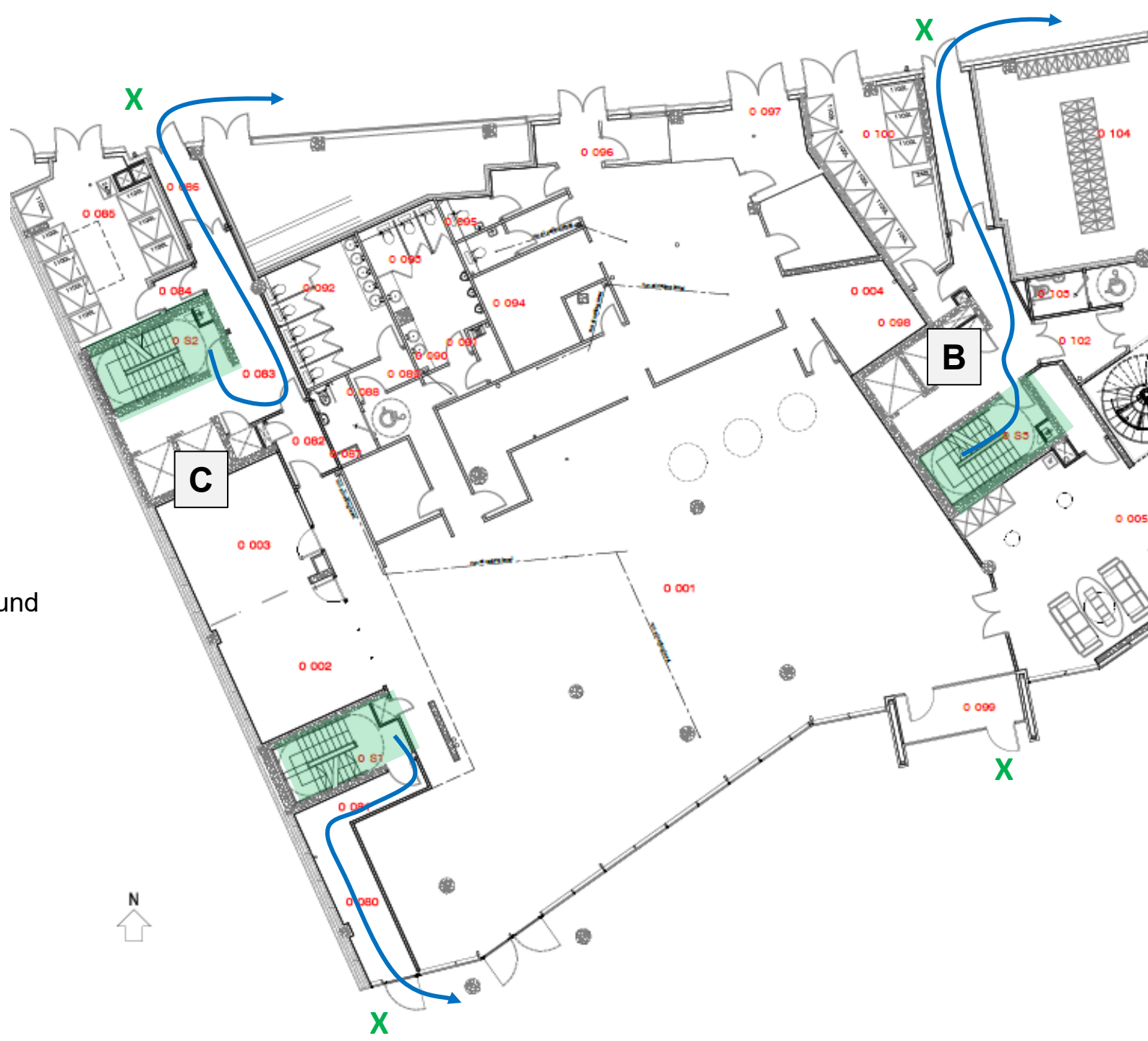
B Block – floors 1 to 5



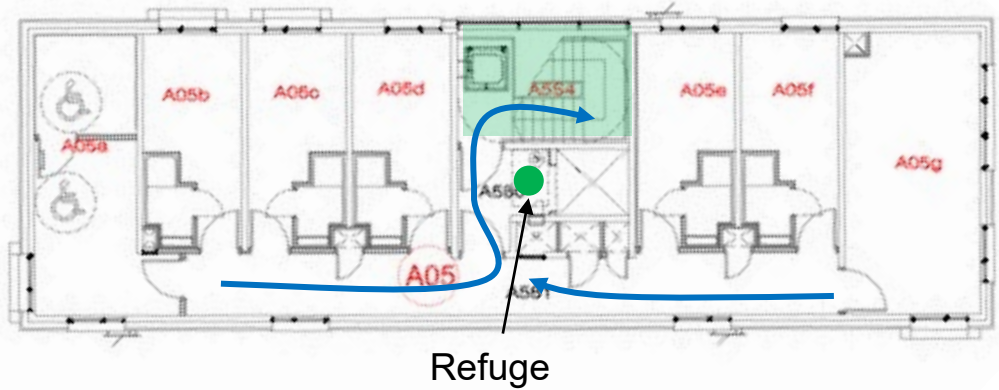
B&C Block – upper ground



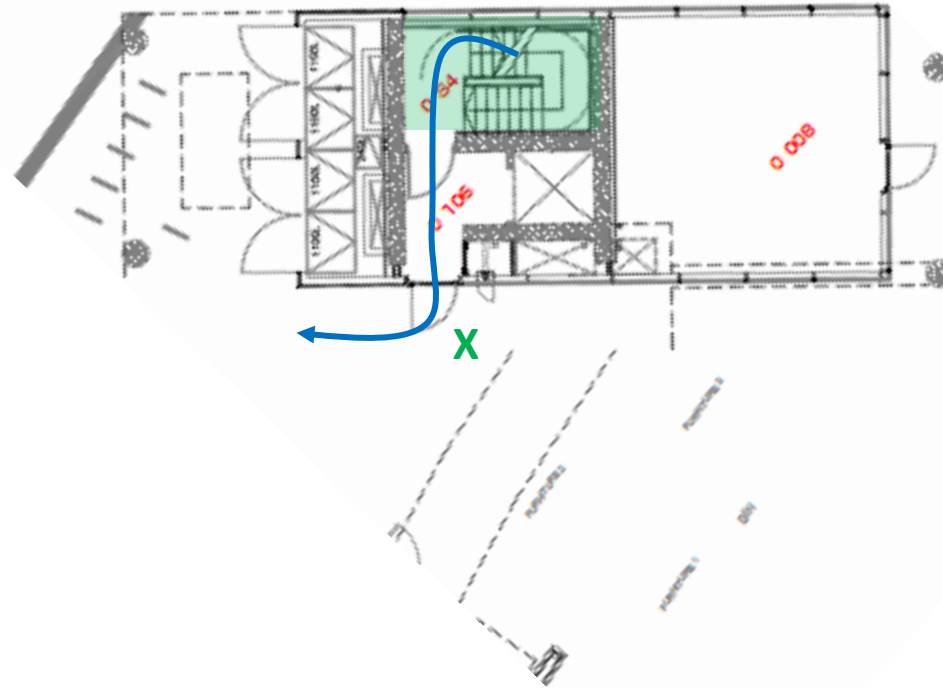
B&C Block – lower ground



A Block – floors 1 to 5



A Block – ground floor exit



External routes to assembly point (by DLR)

